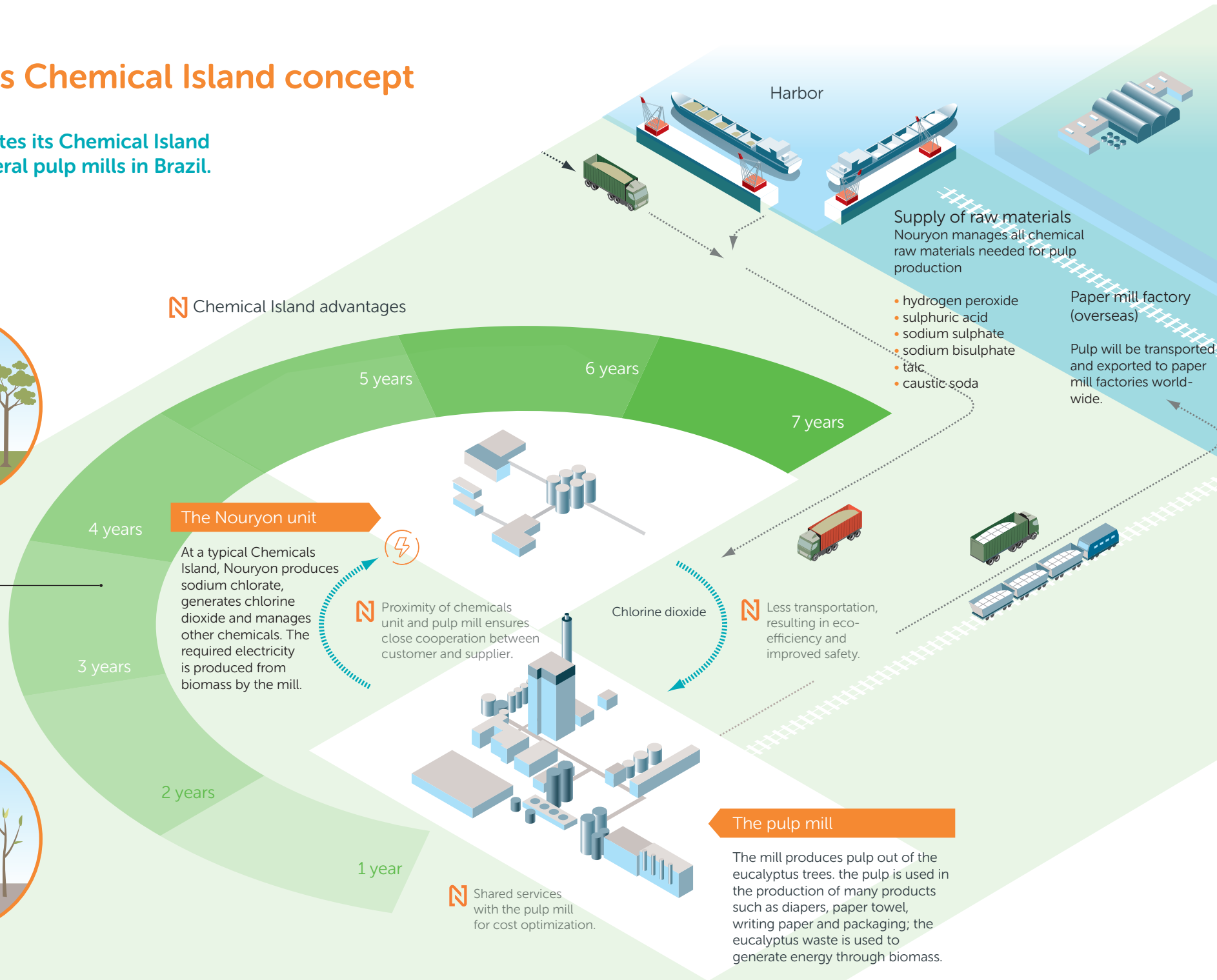


# Nouryon's Chemical Island concept

Nouryon operates its Chemical Island concept at several pulp mills in Brazil.



**Eucalyptus trees**  
The fast-growing eucalyptus plantations which surround the mill will ensure that a sustainable supply of material reaches the pulp mill.



## Chemical Island advantages

### The Nouryon unit

At a typical Chemicals Island, Nouryon produces sodium chlorate, generates chlorine dioxide and manages other chemicals. The required electricity is produced from biomass by the mill.

5 years

6 years

7 years

4 years

3 years

2 years

1 year

Proximity of chemicals unit and pulp mill ensures close cooperation between customer and supplier.

Chlorine dioxide

Less transportation, resulting in eco-efficiency and improved safety.

### The pulp mill

The mill produces pulp out of the eucalyptus trees. The pulp is used in the production of many products such as diapers, paper towel, writing paper and packaging; the eucalyptus waste is used to generate energy through biomass.

Shared services with the pulp mill for cost optimization.

Supply of raw materials  
Nouryon manages all chemical raw materials needed for pulp production

- hydrogen peroxide
- sulphuric acid
- sodium sulphate
- sodium bisulphate
- talc
- caustic soda

Paper mill factory (overseas)

Pulp will be transported and exported to paper mill factories world-wide.

Harbor